

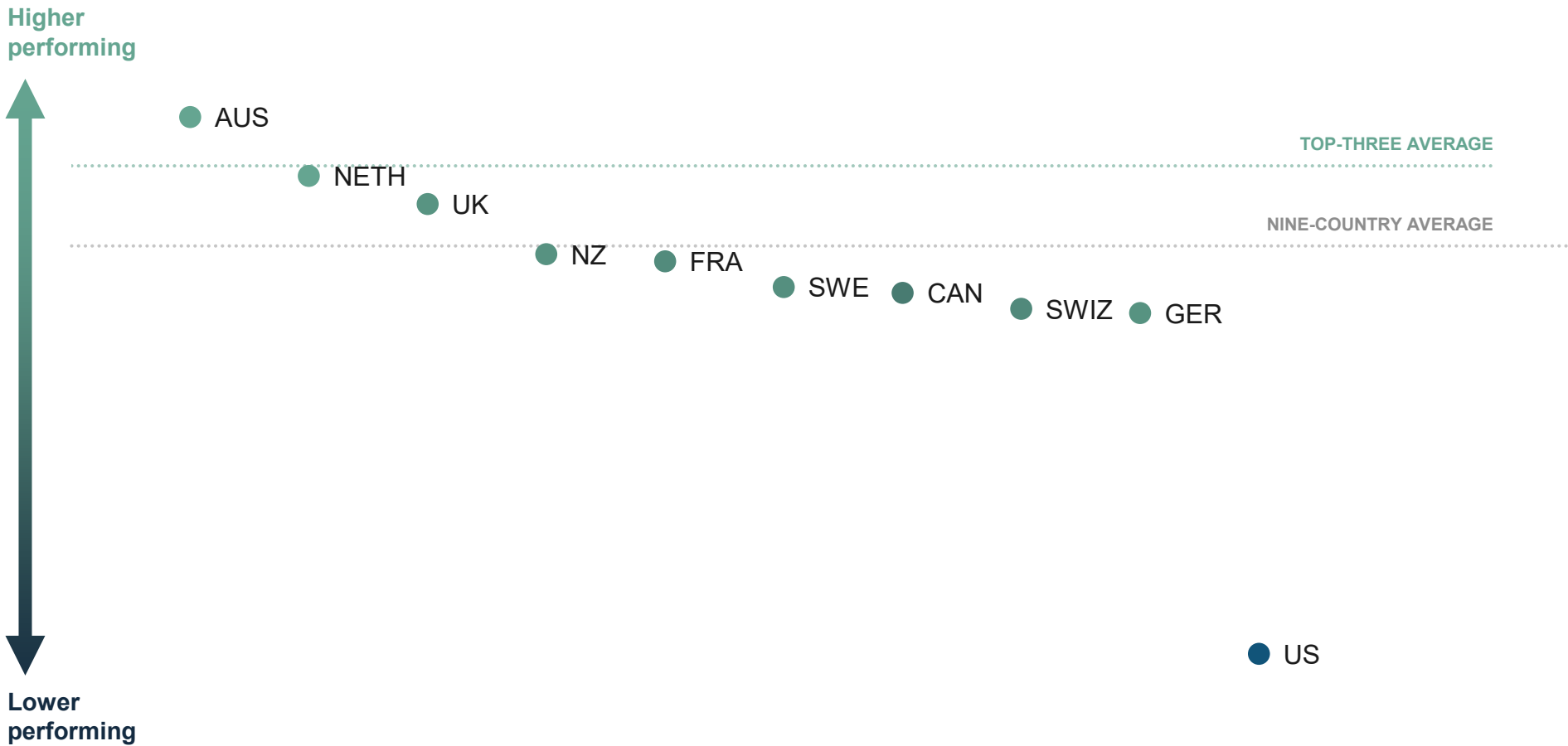
Health Care System Performance Rankings

	AUS	CAN	FRA	GER	NETH	NZ	SWE	SWIZ	UK	US
OVERALL RANKING	1	7	5	9	2	4	6	8	3	10
Access to Care	9	7	6	3	1	5	4	8	2	10
Care Process	5	4	7	9	3	1	10	6	8	2
Administrative Efficiency	2	5	4	8	6	3	7	10	1	9
Equity	1	7	6	2	3	8	—	4	5	9
Health Outcomes	1	4	5	9	7	3	6	2	8	10

Note: SWE overall ranking calculation does not include Equity domain. See “How We Conducted This Study” for more detail.

Data: Commonwealth Fund analysis.

The United States lags its international peers considerably on health system performance.

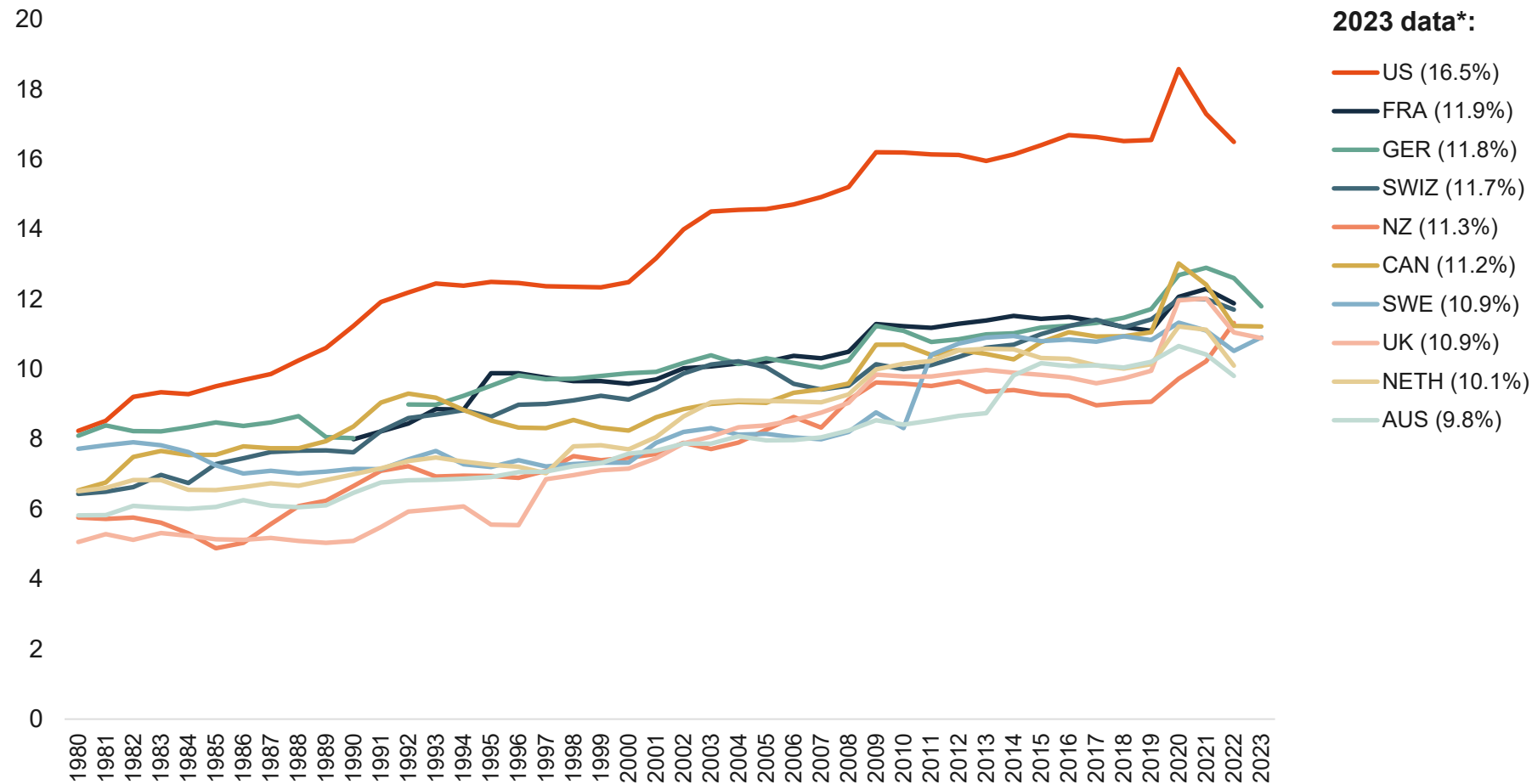


Note: To normalize performance scores across countries, each score is the calculated standard deviation from a nine-country average that excludes the US. See “How We Conducted This Study” for more detail.

Data: Commonwealth Fund analysis.

Health Care Spending as a Percentage of GDP, 1980–2023

Percent (%) of GDP

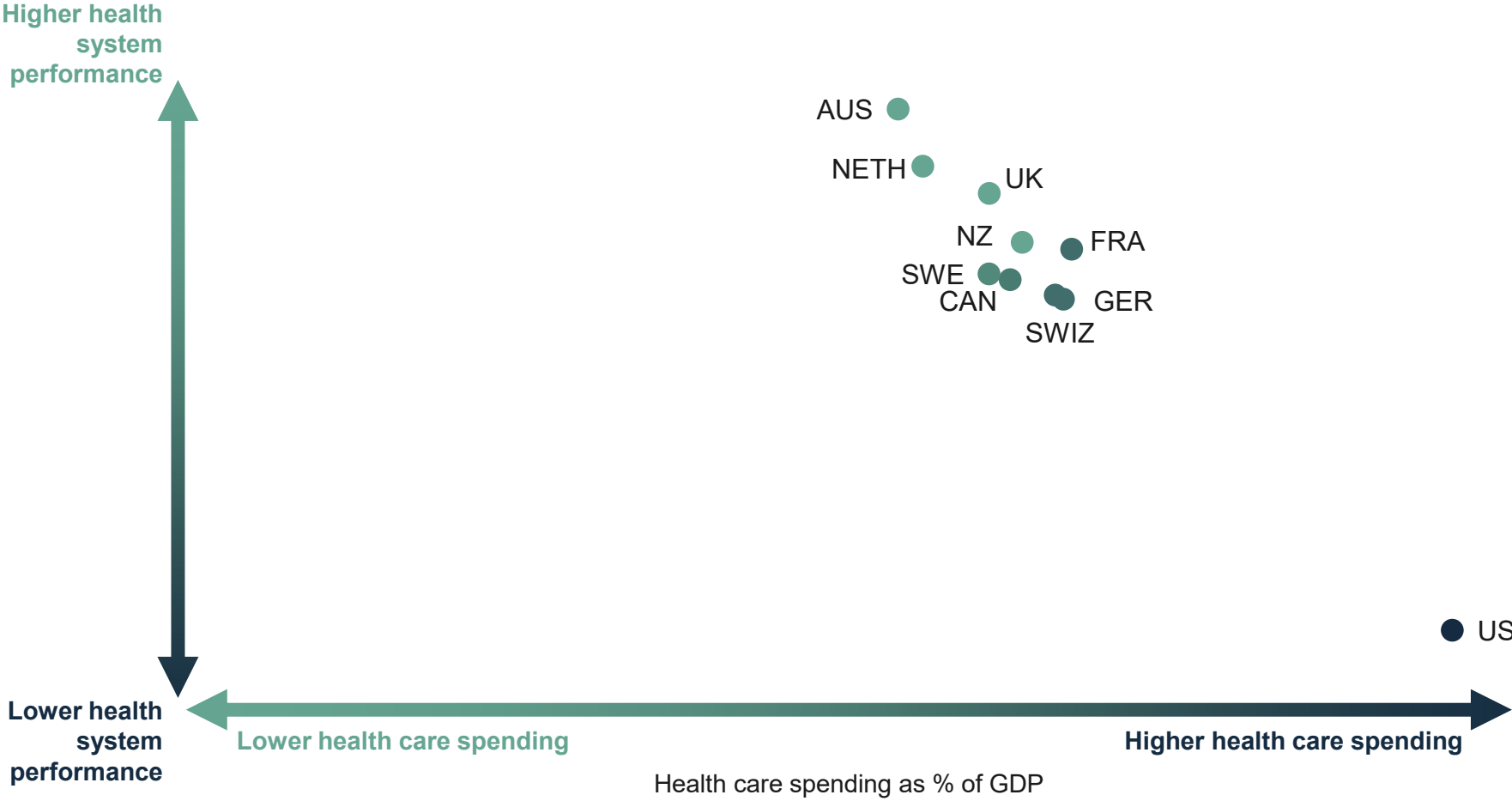


Notes: GDP = gross domestic product. Current expenditures on health. Based on System of Health Accounts methodology, with some differences between country methodologies.

* Data for CAN, GER, SWE, and the UK from 2023; data for AUS, FRA, NETH, NZ, SWIZ, and the US from 2022.

Data: OECD Health Data, July 2024.

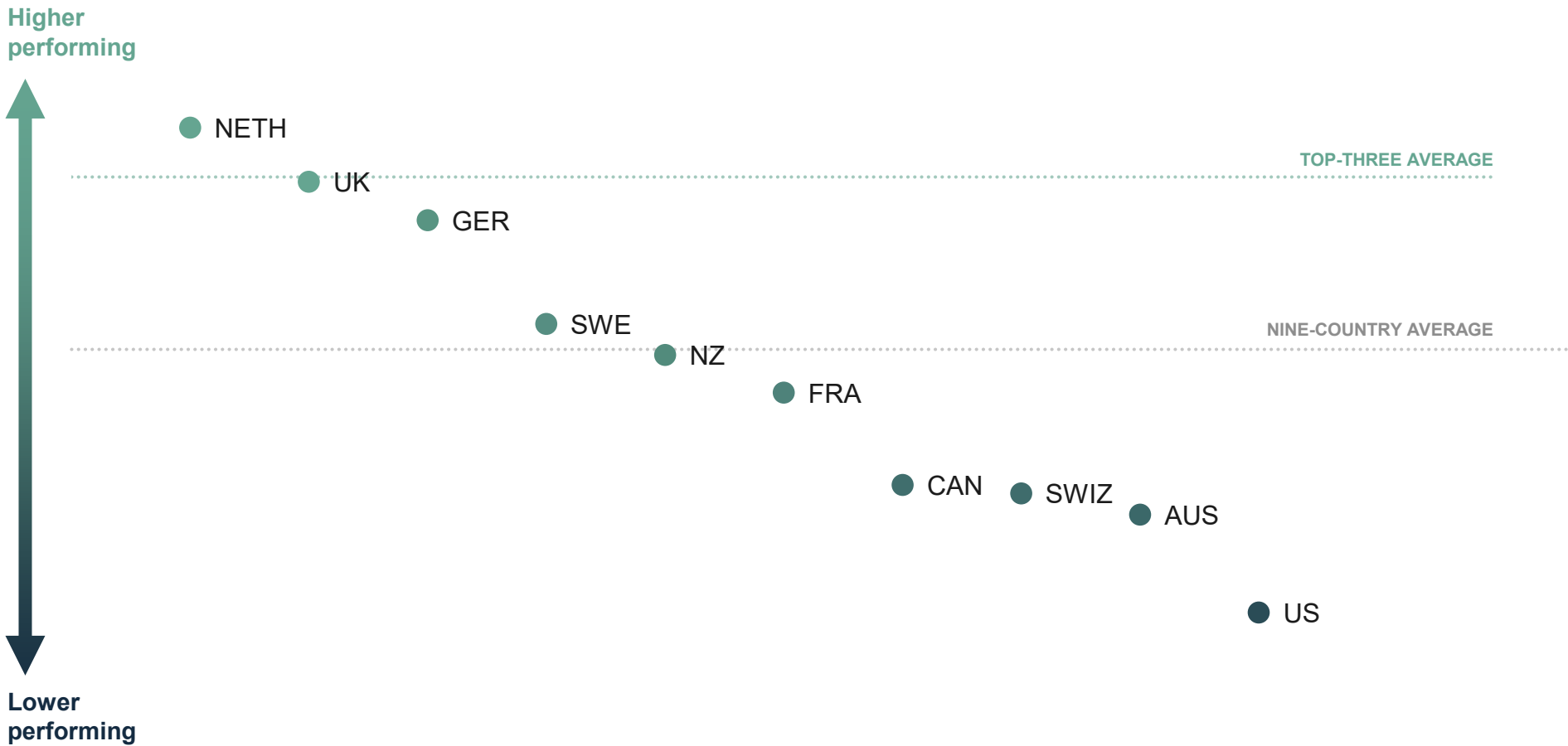
Health Care System Performance Compared to Spending



Notes: GDP = gross domestic product. Health care spending as a percentage of GDP. Performance scores are based on standard deviation calculated from the nine-country average that excludes the US. See "How We Conducted This Study" for more detail.

Data: Spending data are from OECD for the year 2022 and 2023 (updated in July 2024).

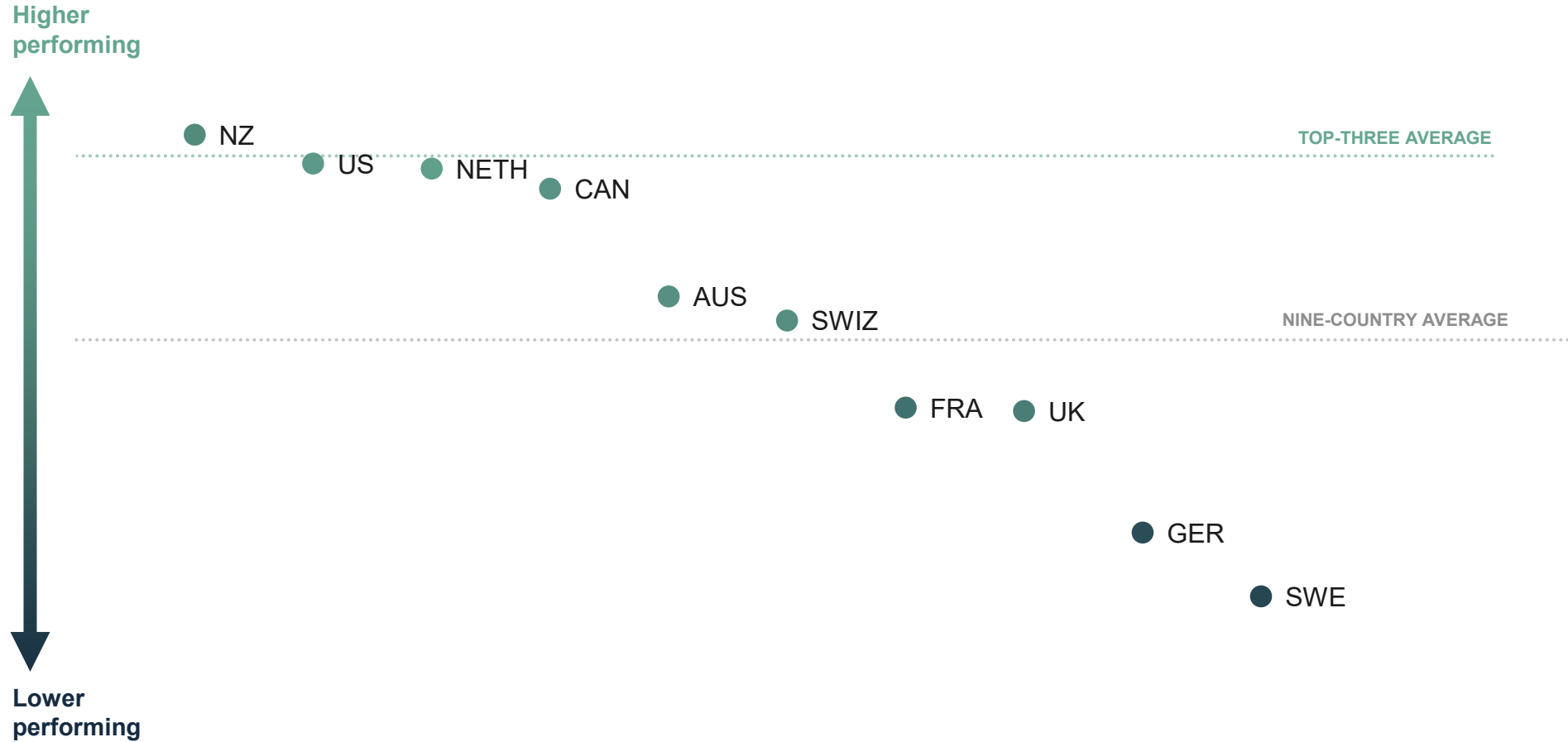
Americans face the most barriers to accessing and affording health care.



Note: To normalize performance scores across countries, each score is the calculated standard deviation from a nine-country average that excludes the US. See “How We Conducted This Study” for more detail.

Data: Commonwealth Fund analysis.

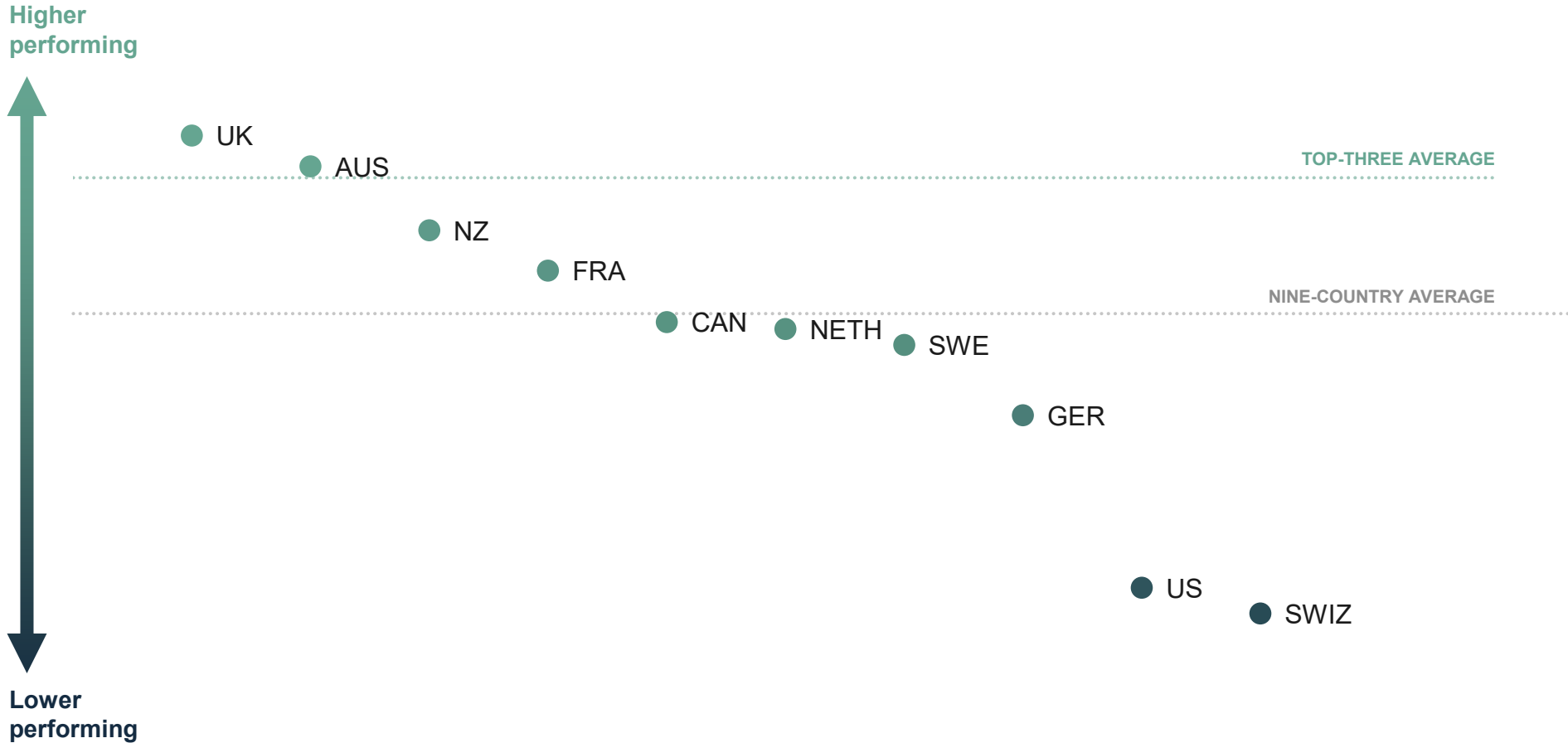
The U.S. is among the top performers for care delivery process.



Note: To normalize performance scores across countries, each score is the calculated standard deviation from a nine-country average that excludes the US. See “How We Conducted This Study” for more detail.

Data: Commonwealth Fund analysis.

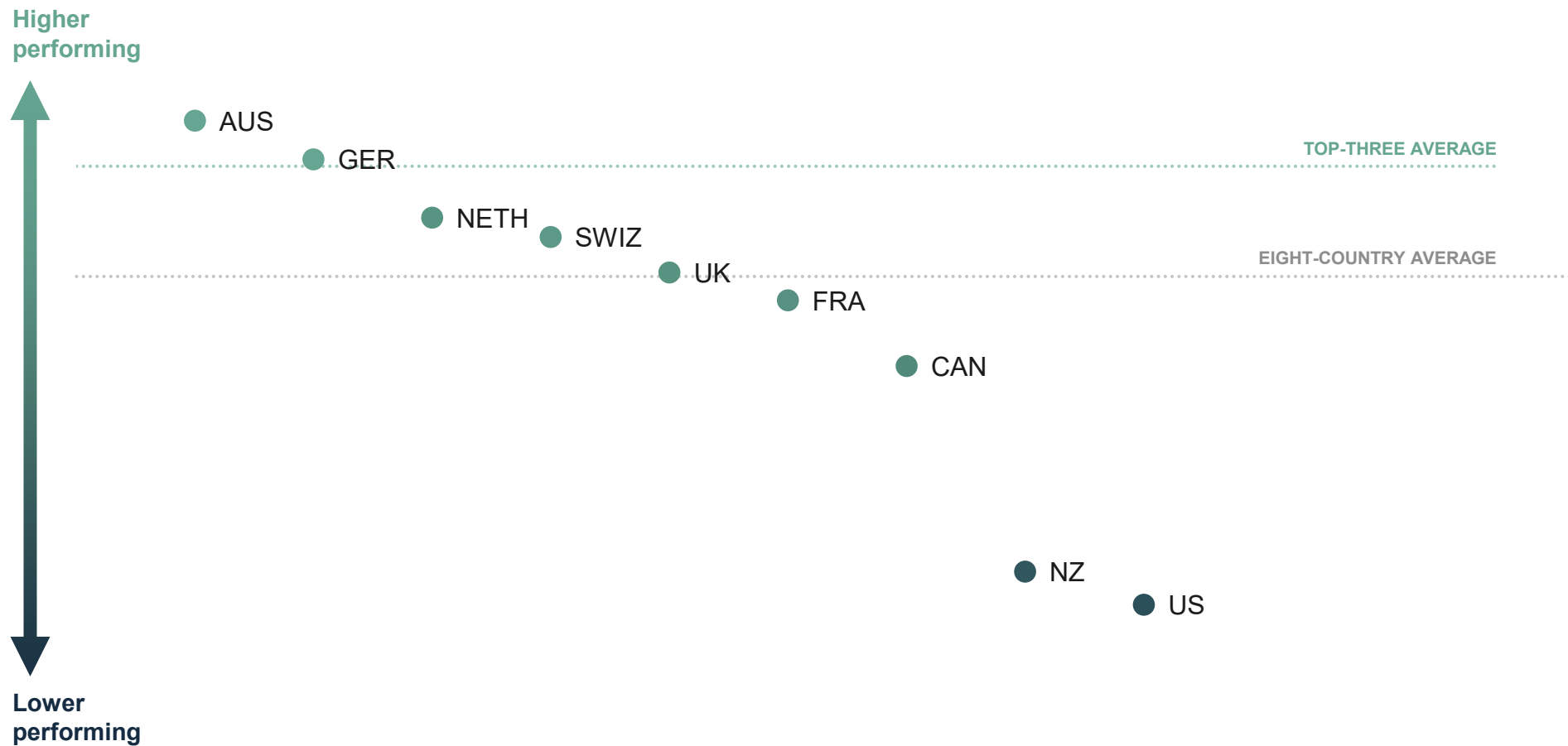
U.S. physicians and patients are most likely to face hurdles related to insurance rules, billing disputes, and reporting requirements.



Note: To normalize performance scores across countries, each score is the calculated standard deviation from a nine-country average that excludes the US. See “How We Conducted This Study” for more detail.

Data: Commonwealth Fund analysis.

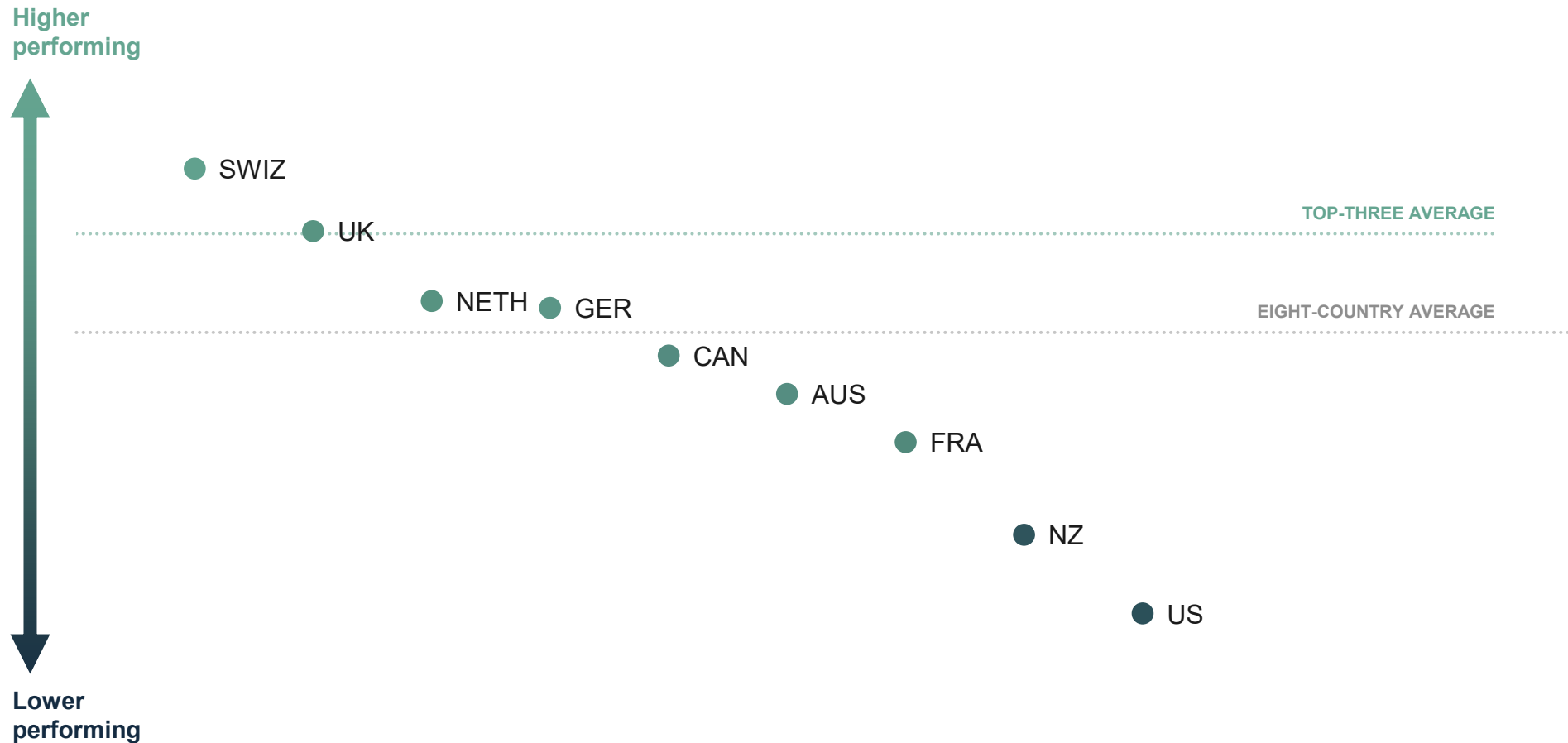
The U.S. and New Zealand trail peers for equity in health care access and experience.



Note: To normalize performance scores across countries, each score is the calculated standard deviation from, in this case, an eight-country average that excludes SWE and the US. See “How We Conducted This Study” for more detail.

Data: Commonwealth Fund analysis.

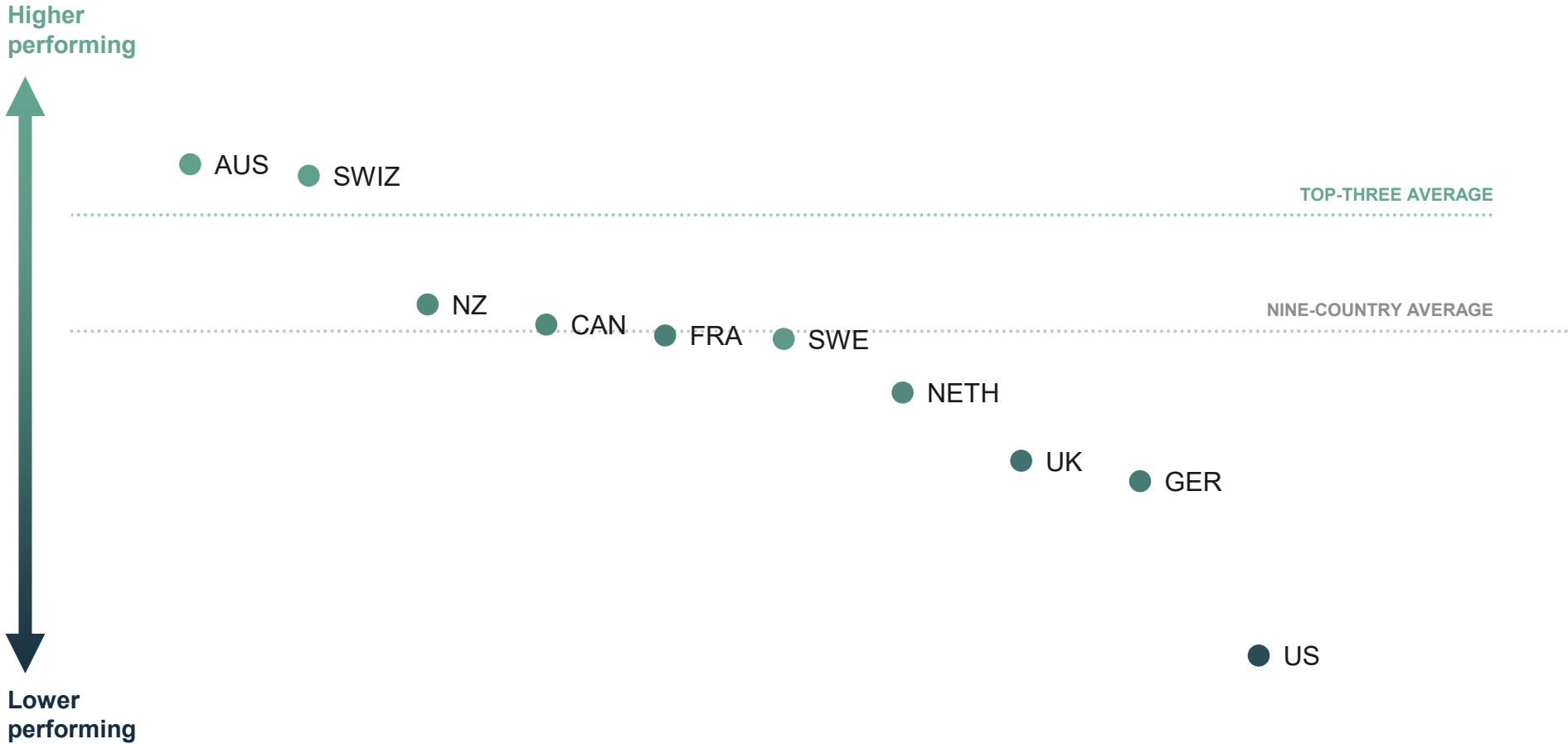
With expanded definition of equity, the U.S. and New Zealand continue to rank lowest.



Note: To normalize performance scores across countries, each score is the calculated standard deviation from, in this case, an eight-country average that excludes SWE and the US. See “How We Conducted This Study” for more detail.

Data: Commonwealth Fund analysis.

Americans live the shortest lives and have the most avoidable deaths.



Note: To normalize performance scores across countries, each score is the calculated standard deviation from a nine-country average that excludes the US. See “How We Conducted This Study” for more detail.

Data: Commonwealth Fund analysis.